

1A Hilsea Court, Mount Waverley, Vic 3149



Townhouse For Sale

Wednesday, 10 July 2024

1A Hilsea Court, Mount Waverley, Vic 3149

Bedrooms: 4

Bathrooms: 3

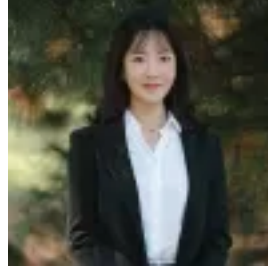
Parkings: 2

Area: 376 m2

Type: Townhouse



Ripple Wu
0398898800



Luna Tian
0398898800

\$1,550,000 - \$1,650,000

A stunning masterpiece revealing high-end finishes and architectural finesse, this just completed town residence is walking distance to locally zoned Mount Waverley Secondary College. Enjoying the serenity of a residential court, the welcoming entry foyer is a large sitting room where you can have a quiet conversation with friends. The retreat is a second peaceful space, situated upstairs and ideal for study. A gorgeous entertainer, host successful gatherings in the open-plan dining/family room, spilling out via double sliding doors to a private garden oasis. Waterfall ends enhance the beauty of the gourmet kitchen, appointed with premium appliances and featuring a butler's pantry. A marvellous four bedroom, three bathroom layout, guests will appreciate the ground floor bedroom with fully-tiled ensuite and parents will adore the upstairs master with walk-in robe and dual-vanity ensuite. The central bathroom boasts a twin vanity and wet-area shower and free-standing tub. Metres from Ballyshannassy Park, walk to Mount Waverley North Primary, Burwood Heights shops, Burwood Brickworks and the tram. Conveniently close to Presbyterian Ladies' College, Wesley College and Deakin University. - Brand new four bedroom, three bathroom home - In a quiet court zoned for Mount Waverley Secondary College - Three living zones - Stylish floorboards - Powder room - Concealed split system heating/air-conditioning - Double auto garage with internal entry