

2/1 Montrose Street, Ashwood, Vic 3147



Townhouse For Sale

Thursday, 11 July 2024

2/1 Montrose Street, Ashwood, Vic 3147

Bedrooms: 3

Bathrooms: 2

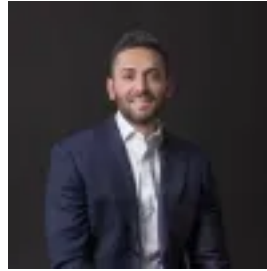
Parkings: 2

Area: 354 m2

Type: Townhouse



Mat Suckling
0394159222



Chris Koulloupas
0394159222

\$1,300,000 - \$1,400,000

The pinnacle of townhome living set high atop Ashwood hill, this spacious three-bedroom home is light-filled & architecturally designed to create a tranquil & sophisticated abode. A voluminous kitchen makes for a culinarians dream with endless storage & bench space, natural stone finishes, feature cabinetry surfaces, soft-close joinery, & bespoke lighting. Appliances are all inclusive, with state-of-the-art SMEG cooktop, rangehood, oven & dishwasher. Beyond the kitchen is the west-facing living & dining area, which is complemented superbly by a private landscaped oasis fit to accommodate every special occasion with family & loved ones. Modern living has been supremely captured in this rare home, designed to harmoniously connect with its private outdoor space & luscious surrounds. The ground floor is home to the master bedroom, featuring an expansive walk-in robe & bathroom ensuite fit with a double vanity. Also included at ground floor is a stand-alone laundry room & powder room. Following the sleek timber staircase to the first level, you will be greeted with an impressive second living space set comfortably between the remaining bedrooms and main bathroom. The spacious bedrooms are defined by generosity of space, authentic materiality & an abundance of natural light. These king-sized bedroom suites are light-filled & exceptionally comfortable, featuring plush carpets for warmth & a beautiful underfoot experience. All bathrooms have been purposely designed to reflect a spa-like experience. Appointed without compromise, these areas are exemplified by luxury finishes & considered detailing. White finger tiles bring a vertical quality to the space, juxtaposed by the elegant marble of the vanities. Oval mirrors bring a salon-like quality while stylish brushed nickel tapware & textured wood veneer soften the spaces making them the perfect place for rejuvenation. Defined by a landscape of beautiful greenery & a friendly neighbourhood community, Ashwood is a haven that offers wonderful dining, abundant retail, first-class education and enviable connectivity. Located just 15 minutes from the CBD, this location borders the winding Gardener's Creeks with its wetlands, reserves & sporting ovals all on offer. Just moments from Ashburton Station & the Monash Freeway, getting around is easy, a few minutes' drive & you can be shopping at Chadstone - 'the fashion capital', walking the fairways of Riversdale Golf Course or taking a course at the nearby Holmesglen Tafe or Monash University. With its own street frontage and impressive private basement, this home is not to miss!

SUMMARY:

- 3 Bedrooms + 3 Bathrooms + Rumpus / 2 Living Areas + Basement Garage
- Ducted Heating & Cooling
- Island Bench & Smeg Appliances to Kitchen
- Nuvolato Marble Benchtops
- Floor-to-Ceiling Tiles to Hotel Inspired Bathrooms
- Ample Storage throughout
- Approx. total 354.2m²

For all further information or to attend any scheduled / private inspections, we ask that all prospective purchasers confirm their interest via email, telephone or sms!