

2/2 King Street, Enfield, NSW 2136



Townhouse For Sale

Tuesday, 25 June 2024

2/2 King Street, Enfield, NSW 2136

Bedrooms: 3

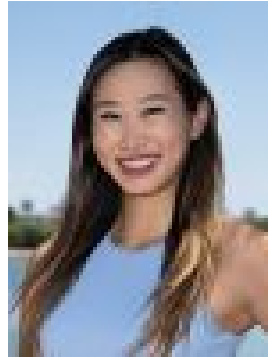
Bathrooms: 2

Parkings: 2

Type: Townhouse



Michael Murphy
0294579339



Christina Heng
0294579339

Forthcoming Auction

Designed by award-winning Sydney-based Eileen Arriguetti of Airlie Designs Architects this stunning residence sets a new benchmark for stylish inner west living. It's moments to Henley Park, Enfield Aquatic Centre, Burwood Station plus a selection of schools.- Streamlined open plan interiors showcasing high-end finishes- Flows to easycare courtyard with tiled BBQ entertaining zone- Highly versatile dual level layout featuring two study nooks- Gourmet kitchen features a breakfast bar and gas cooking - Three bedrooms all with built-ins, master includes ensuite- Modern fully tiled bathrooms, main with bath, plus powder room- Ducted air conditioning, carpets upstairs, tiling downstairs- Double garage with internal access, music room/teens' retreat- Secure boutique designer complex with intercom and alarms- Close proximity to Burwood Westfield and Strathfield Plaza