

2/31 Loxton Terrace, Epping, Vic 3076



Townhouse For Sale

Tuesday, 25 June 2024

2/31 Loxton Terrace, Epping, Vic 3076

Bedrooms: 3

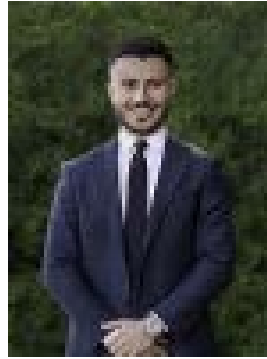
Bathrooms: 1

Parkings: 2

Type: Townhouse



Matthew Zagami
0390705095



Isaac Katsouranis
0390705095

\$490,000 - \$535,000

Discover the perfect blend of comfort and style in this charming two storey townhouse located in the quiet, scenic back streets of Epping. Located close to Westfield Shopping Centre, South Morang train station, bus stops and reputable schools, this townhouse offers unparalleled convenience. Ideal for families, professionals or anyone seeking a contemporary living space. The home features a modern kitchen with stainless steel appliances, plenty of cupboard space whilst overlooking a low maintenance courtyard. The spacious living and meals area, with its open plan design makes entertaining and daily living effortless. Downstairs also includes a convenient separate toilet, practical and easily accessible for guests. Upstairs, you find three generous bedrooms. The master boasts a study nook area, walk in robe and two way access to the ensuite/main bathroom. The additional bedrooms each have built in robes providing ample storage. Further highlights include, separate laundry, timber floorboards, ducted heating, evaporative cooling and double car garage. Don't miss out on the opportunity to make this your new home in the serene and picturesque setting of Epping.