

# 2/33 Napier Avenue, Lurnea, NSW 2170

## Townhouse For Rent

Sunday, 23 June 2024

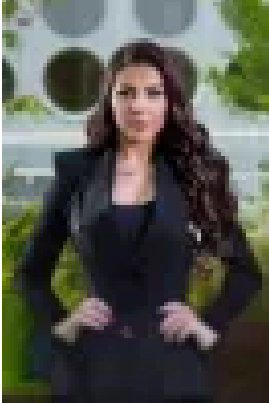
2/33 Napier Avenue, Lurnea, NSW 2170

**Bedrooms: 3**

**Bathrooms: 1**

**Parkings: 1**

**Type: Townhouse**



Fanar Alabid  
0297324444

**\$650 per week**

This charming townhouse nestled in the heart of Lurnea. Find you stepping into a spacious living area, where natural light emphasizes the generous lounge space, creating a warm and inviting atmosphere. Situated opposite Meere Park, 700m to Lurnea High School and within close proximity to Casula Mall and Liverpool CBD. Features:- Fully tiled living area, with split system air conditioning leading into backyard- 3 generously sized bedrooms, all with mirrored built ins- Modern main bathroom, with separate bath tub and shower- U-shaped kitchen with stainless steel electric appliances and ample bench space- Internal laundry, with additional toilet and access to a low maintenance yard- Single lock-up garage with internal access to the townhouse