

**20 Aspire Place, Keysborough, Vic 3173**

**Townhouse For Sale**

Sunday, 23 June 2024



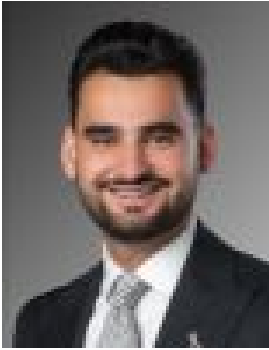
20 Aspire Place, Keysborough, Vic 3173

**Bedrooms: 3**

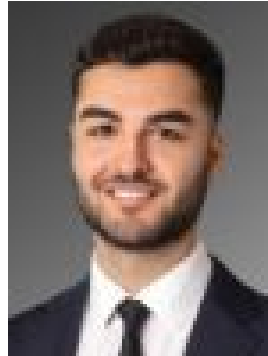
**Bathrooms: 2**

**Parkings: 1**

**Type: Townhouse**



Ozan Kanbur  
0403644379



Emrah Dilbaz  
0422054302

**\$680,000 - \$730,000**

Introducing a haven of comfort and convenience: this exceptional dual-level townhouse with three bedrooms and two bathrooms is nestled in a prime location of Keysborough. With its modern appeal and functionality, this contemporary residence is perfect for first-time buyers, growing families, and those seeking to downsize without compromising quality. Upon entering, you'll be welcomed by a warm ambience in the front living zone, highlighted by wide board flooring and abundant natural light that showcases the home's exceptional layout. The stunning stone kitchen is equipped with chic soft-close cabinets and quality ILVE appliances -including an oven, gas stovetop, rangehood, dishwasher, and glass splashback; a testament to the residence's quality. The rear family and dining room seamlessly extends to an outdoor concrete patio, ideal for gatherings amidst beautifully landscaped gardens and lush lawns. Ascend to the upper level to indulge in true comfort. The spacious master suite features a walk-in robe and a dual vanity ensuite with on-trend black tapware and contemporary tiling. Two additional bedrooms with mirrored built-in robes are serviced by a central bathroom that mirrors the same quality as the master ensuite. Ensuring utmost comfort, the home includes glazed windows, multiple split-system units throughout, LED downlights, a European laundry, a powder room, ample storage solutions, a garden shed, and a remote-controlled garage with internal and rear yard access. This home is ideally positioned amidst various lifestyle conveniences. It is a short walk to Keysborough Gardens Primary School and Sirius College and a quick drive to Haileybury and Lighthouse Colleges. Additionally, it is just a short stroll to Keysborough South Shopping Centre and moments from Parkmore Shopping Centre. Easy access to major roads such as the Eastlink Freeway and Peninsula Link ensures hassle-free commuting to the city and beyond, making this property an excellent opportunity for many.