

**21 Hardy Walk, Lightsview, SA 5085**



**Sold Townhouse**

Thursday, 25 April 2024

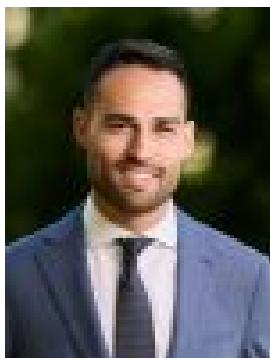
21 Hardy Walk, Lightsview, SA 5085

**Bedrooms: 3**

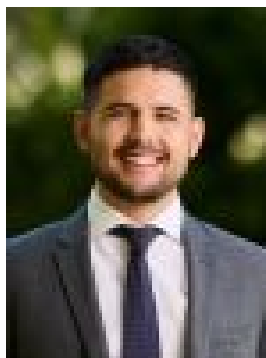
**Bathrooms: 2**

**Parkings: 3**

**Type: Townhouse**



David Scalamera



Juan Gaviria  
0424734897

## Contact agent

Step into this delightful townhouse nestled in the highly sought-after Lightsview suburb. With quality finishes and a welcoming atmosphere, this property is ideal for comfortable family living or as an investment opportunity. Upon entry, ascend to the second level where the kitchen awaits, featuring a stone benchtop, breakfast bar, and modern appliances including a gas stove and oven. With soft-close drawers and ample overhead cupboards, functionality meets style seamlessly. The spacious open-plan living area, bathed in natural light and adorned with graceful timber floating floors, creates a tranquil atmosphere. A skylight adds to the allure while a small study and balcony offer versatile spaces for work or relaxation. Upstairs, retreat to the master bedroom complete with a walk-in robe and ensuite. Two additional bedrooms with built-in robes provide storage, while a fourth bedroom or second living area offers versatility to suit your lifestyle needs. Outside, a small backyard offers a low-maintenance outdoor area, perfect for relaxation and gatherings without extensive upkeep. Adding to the convenience, a double-length auto panel carport provides ample parking space for two vehicles, ensuring both convenience and security for homeowners. With its modern design, quality finishes, and convenient location, this property presents an exceptional opportunity for those seeking a stylish and comfortable urban lifestyle. Don't miss your chance to make this your new home.

- Open living with timber floating floors & balcony
- Kitchen with stone benchtops, overhead cupboards, gas oven & stove
- Main bed with walk-in-robe and ensuite
- Beds 2 & 3 with built-in robes
- Bed 4/second living on the first floor
- Reverse cycle air conditioning
- Downlights in open living
- Spacious double-length garage with automatic roller door
- Low maintenance backyard
- Laundry on ground level with toilet

This property is zoned to Roma Mitchell Secondary College and is conveniently located near Lightsview Village and Greenacres Shopping centre. Surrounded by parks and reserves, it offers ample outdoor recreation opportunities. With excellent educational facilities, nearby amenities, and natural beauty, this location provides a well-rounded lifestyle for residents.

\*Approximate All information provided (including but not limited to the property's land size, floor plan and floor size, building age and general property description) has been obtained from sources deemed reliable, however, we cannot guarantee the information is accurate and we accept no liability for any errors or oversights. Interested parties should make their own enquiries and obtain their own legal advice. Should this property be scheduled for auction, the Vendor's Statement can be inspected at our office for 3 consecutive business days prior to the auction and at the auction for 30 minutes before it starts. RLA323336