

# 22 Dorset Road, Dandenong North, Vic 3175

FLETCHERS

## Townhouse For Sale

Thursday, 11 July 2024

22 Dorset Road, Dandenong North, Vic 3175

Bedrooms: 5

Bathrooms: 3

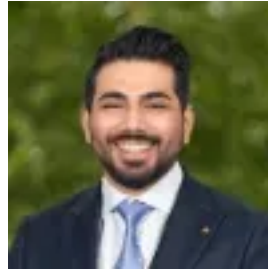
Parkings: 2

Area: 204 m2

Type: Townhouse



Sardeep Singh  
0395717777



Ankush Khanchi  
0395717777

**\$900,000- \$990,000**

A north Dandenong home of wide appeal and exceptional significance, the property's low maintenance spaces, generous dimensions, and indoor-outdoor capabilities lay the foundation for a fabulous family future. Separate zones for living, dining, and entertaining reach their fullest expression in a space which brings them all together - the southside pergola sits below skylights and features a rear deck and kitchen, with plenty of room for quiet evenings or large-scale celebrations. A north-facing pergola on the opposite side of the house and the deep front and rear gardens allow for more elaborate outdoor entertaining. Laid over polished timber flooring, a quality shaker kitchen features high-volume cabinetry, wraparound preparation benches, a breakfast bar and adjacent meals area allowing families to cook, dine, and entertain within a single space. A ground floor master bedroom with BIR & ensuite and two bedrooms with BIR are joined above by two further bedrooms with BIR, a shared bathroom, and a large living room washed in north & east-facing light. Remaining in original condition, this property has served generations well, and will do so for generations to come. Yet, contemporary improvements can be made as future owners seek to align the home with their personal visions. Helping them achieve this are the property's generous dimensions, light-filled living spaces, abundant use of glass, levelled outdoor settings, and east-facing orientation. Placed in a prestigious north Dandenong quarter neighbouring Tirhatuan Park, key arterial roads transport you into neighbouring suburbs and beyond. Nearby you will find Dandenong CBD, Dandenong Hospital, Waverley Gardens SC, and local wetlands. Neighbouring Tirhatuan Park Multiple living zones Deep front & rear gardens East-facing orientation Low-maintenance interiors Moments from Dandenong CBD