

**26A Alfred Street, Templestowe Lower, Vic 3107**



**Sold Townhouse**

Wednesday, 19 June 2024

26A Alfred Street, Templestowe Lower, Vic 3107

**Bedrooms: 3**

**Bathrooms: 2**

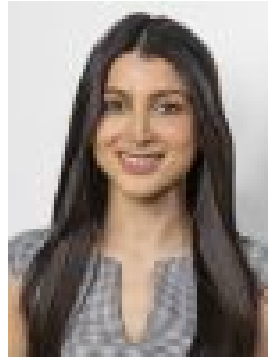
**Parkings: 2**

**Area: 192 m2**

**Type: Townhouse**



Mark Di Giulio  
0407863179



Raha Hossain  
0449054007

**\$1,359,000**

Sitting on its own title among highly regarded local schools and great neighbours this new modern dwelling is an absolute picture of contemporary class and sophisticated style. Enjoying a unique and intricate tri-level floor plan, the home has been designed and finished to the highest standard, boasting quality hardwood flooring, split-system reverse-cycle heating and air-conditioning, light-filled living zone and simply stunning kitchen with stone bench and stainless steel appliance. Matching the exquisite finishes experienced throughout, sleek contemporary bathrooms have magnificent floor to ceiling tiles, spacious bedrooms have built-in robes and master bedroom features its own modern en-suite. Versatile lower ground floor is cleverly designed, incorporating the laundry, garage access and a convenient office/bedroom option. Low-maintenance courtyard has a landscaped garden and plenty of room for entertaining, while powder room, quality tap ware, bathroom fittings, LED downlight and water tank are valued additions to this stylish and sophisticated dwelling that really must be inspected to be fully appreciated. Incredibly located within walking distance to Templestowe Valley Primary School, Templestowe College and Macedon Plaza, with great connection to Westfield Doncaster Shoppingtown, Thompsons Rd, High St, Manningham Rd, Doncaster Rd, Tram Rd and the Melbourne CBD via the Eastern Freeway. This property was sold Off Market by Mark Di Giulio and Raha Hossain from Barry Plant Eastern Group