

29/12 Greendale Way, Carindale, QLD, 4152



Townhouse For Sale

Wednesday, 25 September 2024

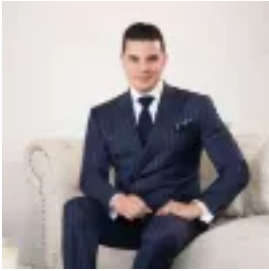
29/12 Greendale Way, Carindale, QLD, 4152

Bedrooms: 3

Bathrooms: 2

Parkings: 1

Type: Townhouse



Will Torres

0738432938

Peaceful Townhouse in a Resort-Style Gated Complex

Immersed in leafy scenery and a relaxing atmosphere within a gated complex, this three-bedroom townhouse offers an outstanding investment or a scenic escape for couples, downsizers and young families.

Presenting a resort-inspired lifestyle with a swimming pool, gym and squash court for residents and guests, and the benefit of on-site management and visitor parking, 'Monte Mariposa' forms a friendly community within an idyllic pocket of Carindale.

Featuring a low-maintenance design maximising space and comfort, the townhouse spans two levels with air-conditioning throughout and sleek floor tiles downstairs that reflect the beautiful natural light invited through large windows.

The entryway flows from the open living and dining spaces to your excellent kitchen, featuring stylish benchtops, plentiful cabinetry and a dishwasher. Meals can be enjoyed inside or outdoors on the covered rear patio, which rests by the grassy courtyard and offers a retreat for hosting guests, afternoon drinks and reading.

All three bedrooms are upstairs with built-in robes and air-conditioning. The master suite opens to a private balcony and reveals a walk-in robe and ensuite. A second bathroom and a powder room service the rest of the residence.

Featuring a remote door and internal access, the garage provides secure parking or a flexible workshop/rumpus with air-conditioning and a laundry.

Additional features:

- Air-conditioning throughout, including the garage
- Ceiling fans in the living areas and master bedroom
- Window and door security screens
- 10kW solar system

Enjoying a peaceful position, this townhouse offers an extraordinary lifestyle in Carindale. Westfield Carindale is only 5 minutes from your door, and you can drive 4 minutes to Pacific Golf Club or walk to the beautiful local parks. Bus stops are 150m from your door, the Gateway Motorway is within easy reach, and you can access the CBD in 20 minutes. Ideal for families, children are in the coveted Mansfield State High School and Belmont State School catchments, and moments from private colleges, including Citipointe.

Disclaimer: Whilst every care is taken in the preparation of the information contained in this marketing, Torres Property will not be held liable for any errors in typing or information. All interested parties should rely upon their own enquiries in order to determine whether or not this information is in fact accurate.