

3079 Cupola Walk, Truganina, Vic 3029

LCR O'CONNOR

Townhouse For Sale

Sunday, 10 December 2023

3079 Cupola Walk, Truganina, Vic 3029

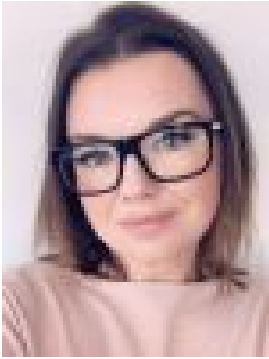
Bedrooms: 3

Bathrooms: 3

Parkings: 2

Area: 203 m2

Type: Townhouse



Amelia Price

0424111360

\$614,108

PROMOTION AVAILABLE - ENQUIRE NOW! Grandview is an exciting community just 28kms West of Melbourne's CBD which will house approximately 1400 families once completed. With convenient accessibility to existing amenities such as public transport, schools and shopping centres; Grandview is everything you require and more. Key Attributes for Grandview - • Master planned community by well-known developer – Stockland • Future Westfield Shopping Centre within minutes • Proposed Government Primary School, Community Centre, Local Convenience Shops and Childcare Centre • 50-hectare conservation reserve with bike and walking paths • Multiple parks and sport reserves – including our well-loved established 'Dinosaur Park' • 3km from Western Freeway • Free community shuttle bus to local train station (Rockbank 3.5km) Echo Townhomes by Glenvill are proud to deliver this outstanding opportunity to be part of the highly sought after Grandview Estate in Truganina. Perfect for first homebuyers, downsizers and savvy investors! Each home features its own individual land title and is completely independently built and therefore has no body corporate fees applicable. These homes are fixed price with full turnkey inclusions allowing you to have a stress free and enjoyable build journey. Check out some of Echo Townhomes by Glenvill's Luxury Standard Inclusions: • Fixed Price Package including Site Costs • Architectural Façade • Haier 600mm Cooktop • Integrated Rangehood • Haier 600mm Oven • Haier Dishwasher • 20mm Stone Benchtop to Kitchen • 20mm Stone Benchtops to Bathroom and Ensuite • Tiled Shower Base to Showers • Timber Laminate Flooring to Living Areas • Quality Carpet to Bedroom and Stairs • Reverse Cycle Split System to Living and Master Bedroom • Blinds and Flyscreens • Fencing • Front and Rear Landscaping • Exposed Aggregate Driveway • Clothesline • Letterbox and more... Do you need assistance with finance? Conveyancing? We are able to help you with every part of your property purchase! Please contact Amelia for more information