

**35/28-32 Railway Crescent, Jannali, NSW 2226**

**FOX & WOOD**

**Townhouse For Sale**

Tuesday, 2 July 2024

35/28-32 Railway Crescent, Jannali, NSW 2226

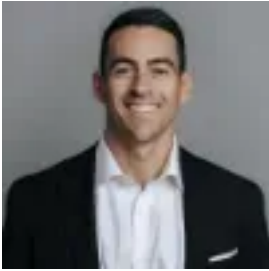
**Bedrooms: 2**

**Bathrooms: 1**

**Parkings: 2**

**Area: 161 m2**

**Type: Townhouse**



Danny Fox  
0408718118



Jed Wood  
0408718118

## For Sale

Quietly nestled at the rear of the complex, this modern two bedroom townhouse offers convenience and comfort. The well-maintained kitchen boasts generous cupboard and bench space, stainless steel appliances, and a servery to the dining room, while the combined living and dining area seamlessly connects to the courtyard. Hardwood floors flow throughout the lower level, and both bedrooms feature mirrored built-in wardrobes, with the main bedroom offering bathroom access and an additional wardrobe. The spacious family bathroom includes a bathtub, and there's an internal laundry with an extra toilet. Outside, the low-maintenance courtyard comes with a covered entertaining deck and a storage room, along with a side-by-side double lock-up garage for your convenience.

- Modern two bedroom townhouse peacefully positioned at the rear of the complex.
- Convenient location just moments from Jannali Village & train station.
- Well-maintained kitchen with ample cupboard and bench space, stainless steel appliances and servery.
- Large living and dining room combines seamlessly with the courtyard.
- Hardwood floors flow throughout the lower level of the home.
- Two large bedrooms, both with mirrored built-in wardrobes & ceiling fans. Main with bathroom access and additional wardrobe.
- Oversized and well-kept family bathroom with bath tub.
- Internal laundry with additional toilet
- Low-maintenance courtyard with covered entertaining deck and storage room.
- Side by side double lock up garage.

Approximate quarterly rates - Strata \$1,360, Water \$171, Council \$368. • Total size - 161sqm.