

4/2 Lynbara Avenue, St Ives, NSW 2075

ASSET *realty*

Townhouse For Sale

Thursday, 11 July 2024

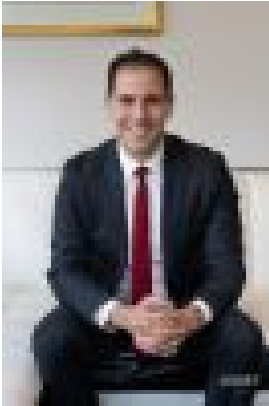
4/2 Lynbara Avenue, St Ives, NSW 2075

Bedrooms: 2

Bathrooms: 2

Parkings: 1

Type: Townhouse



Ari Akbarian
0294987799



James Perry
0431426723

Contact Agent

This captivating townhouse combines the privacy and proportions of a freestanding home with a location equally as impressive. Delivering a vibrant village lifestyle, it holds a prime position at the back of the block wrapped by private north-facing gardens. One of only four private homes, with just one common garage wall, updated interiors showcase a palatial parents' retreat occupying the complete upper level, while a second suite with its own entrance provides the option for independent living. A rare offering tucked quietly away from the bustling hub yet just a short stroll from its charming cafés, boutique shops and parks, it presents an exceptional opportunity for first homebuyers eager to enter the prestigious upper north shore market. Well placed for city transport, families will appreciate the outstanding choice of schools in the area, including Brigidine, Masada and Sydney Grammar Preparatory.

- Modern skylit kitchen fitted with European appliances and 40mm stone benchtops
- Light-filled living area with walls of glass opening to the private alfresco setting
- Sun-filled entertaining courtyard wrapped by established low maintenance gardens
- Complete upper-level parents' retreat with living area, 2nd bathroom and study nook
- Guest/teen or in-law suite with its own entrance allows for independent living
- Soaring high ceilings, floor-to-ceiling windows and reverse cycle air conditioning
- Fully tiled bathrooms and an internal laundry with direct garden access
- Walk-in robe to the master suite, fitted wardrobes and abundant storage
- Internal access from the automatic garage and only one common wall

Location Benefits

- 650m to St Ives Shopping Village
- 600m to St Ives Village Green
- Level 350m to city and station buses
- Level 250m to Stanley St cafés and shops
- 550m to Masada College
- 1km to Pymble Golf Club
- Close to Brigidine and Sydney Grammar Prep