

489A Waverley Road, Mount Waverley, VIC, 3149

Harcourts

Townhouse For Sale

Friday, 30 August 2024

489A Waverley Road, Mount Waverley, VIC, 3149

Bedrooms: 5

Bathrooms: 3

Parkings: 2

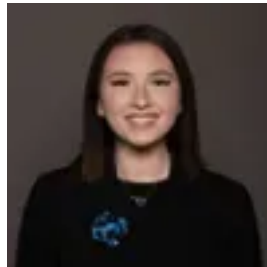
Type: Townhouse



Andrew Dimashki
0401457755



Emma Ren
0426891618



Lola Mihelic

Luxury Home Prestigious Location

This contemporary provincial-inspired family home boasts a timeless facade with ornate stone and brickwork, fully rendered external walls and curated gardens. The wide driveway and expansive paved pathway lead to a welcoming portico illuminated by LED up/down lighting. Security cameras and sensor lights provide peace of mind, while the oversized double lock-up drive-through garage offers ample parking and storage space.

Ideal for a large family seeking space and luxury, the home features ducted heating and AC, while high square set ceilings and crisp white walls and ceilings create space. Black aluminium-framed double-glazed windows and glass sliding doors contrast with opulent polished timber hardwood floorboards. The solid timber staircase with LED side lights lends to the open-plan layout which joins a family room with a gas fireplace and opaque windows. An upper level sitting room with an overhead skylight is a nice place to read. A ground floor second master bedroom (5th Bedroom) can be used as a home office with storage space.

The entertainers' kitchen boasts a luxurious four-seater breakfast island finished in 80mm marble-look stone counter tops with waterfall edging and high-end SMEG appliances. Pendant lighting adorns a double bowl under-mount sink with a pull-down veggie spray mixer. An iconic dark mirrored splash-back is accentuated by overhead handleless walnut laminate cabinetry, with more soft-close gloss-white cabinets found below and in the walk-in pantry. High-end appliances will please chefs.

All bedrooms enjoy premium carpet and storage robes, with the master boasting a walk-in robe and a decadent private ensuite. The ground floor bathroom is accompanied by a mud room with stone finishes, storage, a sink, and luxe cabinetry. All bathrooms are decked with black fixtures, contemporary mixer and sink-ware, frameless showers and 40mm stone-top vanity units. The main bathroom features a double vanity and a gorgeous freestanding bathtub.

Prestigiously located home next to the 623 bus stop and within easy walking distance to the coveted Pinewood Primary School. It's in the catchment for Mount Waverley Secondary College, with Huntingtower School and Avila College also nearby. Waverley Private Hospital and Pinewood Shopping Village are just a short stroll away, while Holmesglen TAFE is also close. The Melbourne CBD is a 25-minute drive.