

# 52/1 Residences Circuit, Pimpama, Qld 4209

## Townhouse For Sale

Wednesday, 10 July 2024



52/1 Residences Circuit, Pimpama, Qld 4209

**Bedrooms: 3**

**Bathrooms: 2**

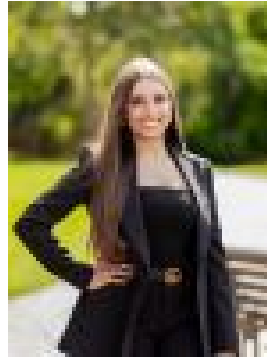
**Parkings: 1**

**Area: 158 m2**

**Type: Townhouse**



Jason Atkinson  
0438690656



Mikayla Melhem  
0415102030

## Auction

Welcome to 52/1 Residences Circuit, Pimpama! An immaculate townhouse nestled in the prestigious Residences complex in The Heights, Pimpama. This exceptional property is perfectly positioned on a corner block, providing the unique advantage of having only one neighbour. Experience the serenity and privacy that sets this home apart from the rest! Step inside to be greeted by the bright and airy ambiance that fills the entire home. At the heart of this residence lies a light-filled tiled dining room, where large glass sliding doors frame breath-taking views of the serene nature parklands at the rear of the property. Imagine enjoying your morning coffee or family meals while being surrounded by the calming beauty of nature. Just down the hall, you'll find a separate lounge room, designed to be used for Friday movie nights or just a space for the family to spread out. With the addition of reverse split air conditioning, you are promised a cosy atmosphere year-round. The spacious open-plan kitchen is a chef's dream, boasting ample storage, premium stainless BOSCH appliances, and a gas cooktop. The tasteful design and modern finishes add a touch of elegance, making this kitchen not only functional but also a stylish centrepiece for entertaining guests. Whether you're preparing a quick breakfast or hosting a dinner party, this kitchen is equipped to handle all your culinary needs. As you venture upstairs, you will discover a haven of tranquillity. The three spacious bedrooms are thoughtfully designed with built-in wardrobes and ceiling fans, ensuring comfort and convenience for everyone in the family. The master suite is a true parents' retreat, offering a walk-in robe and a luxurious private ensuite that overlooks the lush greenery in your own backyard. Wake up each morning to the soothing sights and sounds of nature, right outside your window! But the charm of this home doesn't end there. An additional landing area above the staircase provides a versatile space that can be transformed into a third living area, home office, or a cosy reading nook, the possibilities are endless. This extra space adds to the functionality and adaptability of the home, catering to your unique lifestyle needs. Outside you will find the low-maintenance landscaped yard, designed for minimal upkeep and maximum enjoyment. Nature lovers will be delighted by the proximity to the parklands, just steps away from your backyard. Enjoy leisurely walks, fun with your pets, or simply bask in the beautiful Gold Coast sunshine. The outdoor space is an extension of the serene lifestyle this property offers, making it the perfect place to relax and recharge.

**Features Include:**

- Open plan modern kitchen with sleek stone benchtops, BOSCH appliances, ample storage space and breakfast bar
- Spacious, tiled dining area with large windows for natural light
- Additional tiled lounge room with split air conditioning
- Master bedroom with split air conditioning, walk in wardrobe and large private ensuite
- Separate landing that could be easily converted to an additional living space
- Two additional bedrooms with built in wardrobes and ceiling fans
- Well appointed bathroom with built in bathtub and additional powder room for guests downstairs
- Separate laundry
- Single lock up, automatic garage
- Fully fenced, low maintenance yard

**Additional Features:**

- VACANT & move in ready!
- Double storey home
- On a corner block, only one neighbour
- Gas hot water
- Built in 2017
- South facing
- NBN ready!
- Body corporate \$72 per week (approx.)

Why do people love The Heights, Pimpama? The Heights is a meticulously designed community perfectly positioned on the northern Gold Coast. You are able to enjoy a convenient 20-minute drive to the pristine beaches of Surfers Paradise or a 40-minute journey to Brisbane's vibrant cultural and business hubs. With the unparalleled convenience with top-tier schools, medical facilities, bustling shopping centres just minutes away and easy access to the M1, commuting is an absolute breeze. Right in our suburb, the impressive \$92 million Pimpama Sports Hub awaits, offering state-of-the-art facilities for all to enjoy. With continuous growth and robust infrastructure development, Pimpama has become a thriving hotspot. Don't miss out on this incredible opportunity to own a piece of paradise. This townhouse is vacant and move-in ready, waiting for you to make it your own. Embrace the perfect blend of modern living and natural beauty at 52/1 Residences Circuit, Pimpama. Contact us today!

**Disclaimer:** This property is being sold by auction or without a price and therefore a price guide cannot be provided. The website may have filtered the property into a price bracket for website functionality purposes. Important: Whilst every care is taken in the preparation of the information contained in this marketing, Ray White will not be held liable for the errors in typing or information. All information is considered correct at the time of printing.