

**6/36 Everglade Street, Yarrabilba, Qld 4207**

**Townhouse For Sale**

Saturday, 29 June 2024



6/36 Everglade Street, Yarrabilba, Qld 4207

**Bedrooms: 2**

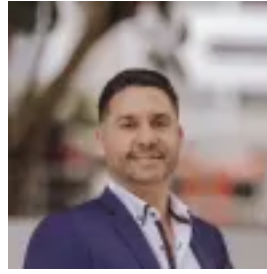
**Bathrooms: 2**

**Parkings: 1**

**Type: Townhouse**



Rodrigo Themudo  
0756611782



Tulio Fontes  
0756611782

## Coming Soon

Fantastic modern living 2 Bedroom townhouse + Study located at one of Yarrabilba's newest luxury residential townhouse complex! This modern townhouse is only 2 years-old and is conveniently located walking distance to Coles Yarrabilba and only 5 minutes driving from the Logan Village Marketplace with Woolworths, Pharmacy, Medical Centre and more. Featuring a spacious layout with an open plan kitchen and living area, it boasts a stylish kitchen with a stone benchtop island and is fitted with stainless steel leading brand appliances including dishwasher. This beautiful townhouse has 2 generously sized bedrooms plus a study and the master bedroom includes an ensuite, walk-in robe and air-conditioning. Perfect home for the modern family. Key features include:

- Large master bedroom with air conditioning, ceiling fan, walk-in robe, and ensuite.
- Spacious open plan living and kitchen area with air conditioning
- Living area also features modern timber look flooring and air-con
- Modern kitchen with a stone benchtop island, ample storage, and leading brand appliances including dishwasher
- Second bedroom with built-in robe and ceiling fan.
- Study or second living area/Media room
- Laundry
- Covered single carport

• Currently tenanted until 07/07/2025 for \$460/week

Conveniently situated within walking distance to Coles, cafes, bakeries, doctors, and Darlington Park, this property offers easy access to amenities. Yarrabilba is nestled between Brisbane's CBD and the Gold Coast cities that will host the 2032 olympics and is also close to Mount Tamborine and this amazing suburb provides a family-friendly community and a vibrant lifestyle for residents.

- 2 minutes driving from Coles
- 3 minutes driving from Yarrabilba State School
- 5 minutes driving from Logan Village Marketplace with Woolworths
- 5 minutes driving from Yarrabilba State Secondary College
- 25 minutes driving from Tamborine Mountain
- 30 minutes driving from Gold Coast
- 40 minutes driving from Brisbane CBD

IMPORTANT WHILST EVERY CARE IS TAKEN IN THE PREPARATION OF THE INFORMATION CONTAINED IN THIS MARKETING, Grow&Co Property Agents WILL NOT BE HELD LIABLE FOR ANY ERRORS IN TYPING OF INFORMATION. ALL INFORMATION IS CONSIDERED CORRECT AT THE TIME OF ADVERTISING