

6/6 Boadle Road, Bundoora, Vic 3083

Townhouse For Sale

Sunday, 23 June 2024

6/6 Boadle Road, Bundoora, Vic 3083

Bedrooms: 2

Bathrooms: 2

Parkings: 1

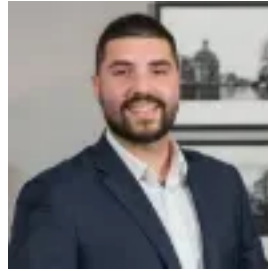
Area: 117 m2

Type: Townhouse



Tim Yu

0394457000



Jake Popalis

0394457000

\$480,000 - \$528,000

Welcome to your gateway into Mt Cooper Estate with this exquisite Townhome, offering a prime opportunity to own a piece of this prestigious community. This charming residence boasts two generously sized bedrooms, each featuring built-in robes; the master bedroom includes an ensuite and a private balcony, perfect for enjoying quiet moments. A centrally located bright bathroom with a shower over bathtub adds practicality. Downstairs, an expansive open-plan living area seamlessly integrates a family room, dining space, and a well-appointed kitchen with ample cabinetry and bench space, catering to both relaxation and entertainment needs. Step outside to discover your very own private courtyard, complete with a garden shed for additional storage solutions. The convenience of a single off-street car space at the front of the home adds further practicality. Living in Mt Cooper Estate offers the privilege of easy access to a wealth of amenities, including Polaris and Bundoora Square Shopping precincts, excellent public transport options with Tram Route 86 nearby, and educational institutions such as RMIT and LaTrobe Universities. Nearby Bundoora Parklands and Golf Clubs provide ample recreational opportunities. Whether you're downsizing, purchasing your first home, or seeking a solid investment, this property offers more than what you're searching for. Terms: 10% deposit, balance 30/60 days