

6/63 Wattle Road, Hawthorn, Vic 3122

Townhouse For Sale

Tuesday, 25 June 2024



6/63 Wattle Road, Hawthorn, Vic 3122

Bedrooms: 3

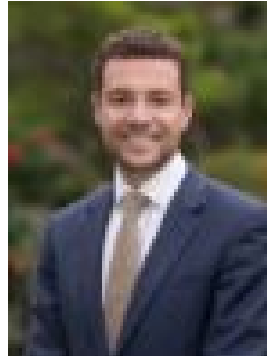
Bathrooms: 1

Parkings: 1

Type: Townhouse



Chris Hingston
0298105000



James Fitzpatrick
0398105000

\$840,000 - \$880,000

Designed in the 1960s by esteemed architect Roy Simpson, "Knottywood Flats" is a unique collection of perfectly private mid-century townhouses set in peaceful botanic gardens. Located in a prestigious period precinct just a short stroll from Glenferrie Road, its idyllic seclusion belies its exceptional convenience to a host of prized amenities including elite private schools, vibrant shopping and dining, trams, trains, and even the City itself. One of two in their own independent zone at the rear, this sensational single level residence is as ideal for busy families as discerning downsizers with its generous three-bedroom accommodation, prized northern rear aspect, sun-filled easy care garden and covered parking as well as a storage cupboard. Immaculate proportions include light filled living and dining areas with floor to ceiling windows and doors unfolding to a large entertaining patio and the delightful rear garden, updated kitchen with excellent storage, three spacious bedrooms including one with robes plus the larger main with extensive built-in robes/storage, functional bathroom with separate WC, excellent built-in storage, split heating/cooling, original character, visitor parking. Enjoy a premium Hawthorn lifestyle only a few doorsteps from Glenferrie Primary with a short walk to St Joseph's and Scotch College, Burwood Road and Glenferrie shopping and dining, local favourite Renaissance supermarket, Lido Cinema, Glenferrie and Riversdale Road trams to Kew private schools, the CBD and MCG, Fairview Park and the Yarra River, and the list goes on and on.