

**619/2 Nicol Way, Brendale, Qld 4500**



**Townhouse For Sale**

Wednesday, 10 July 2024

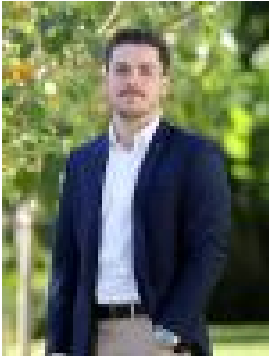
619/2 Nicol Way, Brendale, Qld 4500

**Bedrooms: 3**

**Bathrooms: 1**

**Parkings: 2**

**Type: Townhouse**



Mitch Brown  
0406706628



Jack Harvey  
0423226839

## For Sale

Nestled within the secure 'The Grange' complex, this delightful three-bedroom townhouse at 619/2 Nicol Way, Brendale offers both comfort and convenience. The lower level features a tiled living and dining area, a well-equipped kitchen, a separate laundry, and an additional toilet. The upper level boasts three well-proportioned bedrooms, a two-way bathroom with direct access from the master bedroom, and a separate toilet. The fully fenced backyard provides a private outdoor space, while the single lock-up garage offers secure parking. Residents will enjoy exclusive access to multiple resort-style pools, BBQ areas, half courts, and a tennis court all year round. Conveniently located, this property is just a short drive to Lawnton State School, Bray Park State High School, ALDI, Lawnton railway station, and Brisbane CBD.

**Key Features:-** Three well-proportioned bedrooms with built-in wardrobes - Two-way bathroom with direct access from the master bedroom - Tiled living and dining area with air conditioning for year-round comfort - Well-equipped kitchen - Separate laundry and additional toilet on the lower level - Fully fenced backyard - Single lock-up garage with remote access - Exclusive access to multiple resort-style pools, BBQ areas & tennis courts - Located within a gated community in 'The Grange' complex

**Nearby Amenities:** 3 mins estimated drive to Strathpine train station (700 m) 4 mins estimated drive to Strathpine West State School (2.3 km) 4 mins estimated drive to Bray Park State High School (2.49 km) 5 mins estimated drive to Lawnton State School (3.37 km) 5 mins estimated drive to Lawnton railway station (3.22 km) 7 mins estimated drive to Strathpine Bowling Alley (3.9 km) 10 mins estimated drive to UniSC Moreton Bay, Petrie (5.2 km) 27 mins estimated drive to Brisbane CBD (18.17 km)

Information contained on any marketing material, website or other portal should not be relied upon and you should make your own enquiries and seek your own independent advice with respect to any property advertised or the information about the property.