

# 8/18 Stapley Crescent, Altona North, Vic 3025

## Townhouse For Sale

Tuesday, 25 June 2024



8/18 Stapley Crescent, Altona North, Vic 3025

**Bedrooms: 4**

**Bathrooms: 3**

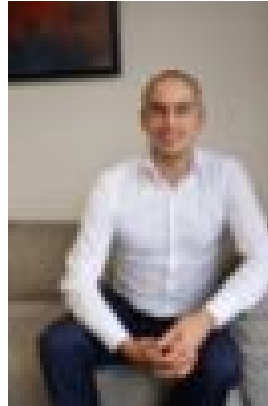
**Parkings: 2**

**Area: 224 m2**

**Type: Townhouse**



Leonard Siragusa  
0393478886



James Smarrelli  
0447839809

## **\$850,000-\$900,000**

Masterfully designed and magnificently appointed, this brand new townhome epitomizes contemporary living at its finest, right on the doorstep of Newport. From its striking architectural facade to its thoughtfully crafted interior, this sensational residence comprises; \*4 Bedrooms; 3 upstairs, all with WIR's, the main with a oversized luxurious ensuite, plus a 4th bedroom on the ground floor serviced by a two-way bathroom \*Chef's kitchen with a 900mm oven & electric induction cooktop, large stoned breakfast bench, refined two toned cabinetry, butlers pantry & double sink \*Open plan living & dining area flowing out to a sunny alfresco courtyard \*Bathrooms with rain head showers & niches, wall-mounted floating vanity units with above bench basins plus a ground floor bath \*Engineered timber floors throughout with quality carpet to the bedroom and tiles to the bathrooms \*2 x split system air conditioning, double glazed windows, water tank & external storage shed. \*High ceilings & door heights giving the impression of the volume of space \*Lock up garage & OSP for another \*Walk to The Circle's shops & Second Avenue Grocer. Close to Millers Junction Village shopping & Reading cinema, Altona Gate, Borrack Square & Grazeland food playground. \*Near Bayfit Leisure Centre, Newport Lakes Reserve, parkland, and waterfront cycling paths, Altona beach plus easy access to the city via the Westgate freeway. RENTAL ESTIMATE: \$800 per week plus substantial depreciation benefits for savvy investors