

8/189 Ben Boyd Road, Neutral Bay, NSW 2089



Townhouse For Rent

Wednesday, 10 July 2024

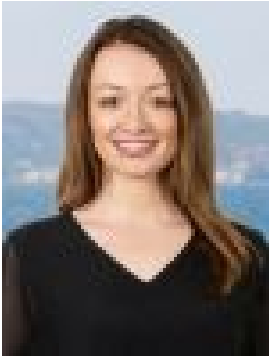
8/189 Ben Boyd Road, Neutral Bay, NSW 2089

Bedrooms: 3

Bathrooms: 2

Parkings: 2

Type: Townhouse



Jessica GibsonClarke
0426733775

\$1,500 per week

Quick Facts Inspection Time: Sat 13 Jul 9:40 AM - 10:00 AM Available: 17th July, 2024 Application: Apply online at snug.com/apply/raywhitelowernorthshore Lease Period: 12 Months preferred Pets: Considered on application Parking: Double secure car spaces Enjoy a low-maintenance lifestyle with this spacious, modern townhome near Neutral Bay village. This three-level home includes a versatile loft that can serve as a fourth bedroom. Enter through a private courtyard into a light-filled space with open plan living and dining areas. The stone kitchen opens to a sunny rear terrace perfect for entertaining. The second level has three bright bedrooms, including a master with an ensuite. The top-floor loft provides flexible living space. Features include a bright neutral palette, timber flooring, modern kitchen with stone benchtops, ground-floor laundry with powder room, master with walk-in robe and Juliette balcony, in-roof storage, and secure side-by-side parking. Conveniently located near shops, cafes, buses, and schools. Accommodation: • Spacious living and dining, with separate breakfast nook • 3 generous bedrooms, each with air conditioning • Additional 4th bedroom, teenage retreat or work from home loft space • Updated kitchen featuring gas cooktop, dishwasher • Two modern bathrooms, one complete with bath tub, plus additional WC Features: • Internal laundry • Front and rear private gardens • Secure parking • 150m to Neutral Bay Public School • 550m to Woolworths, 100m to The Oaks • Moments from CBD bus routes "To apply for this property, please apply online at: snug.com/apply/raywhitelowernorthshore" FOR FURTHER INFORMATION PLEASE CONTACT: JESSICA GIBSON-CLARKE 0426 733 775 LEWIS COUTTS - 0431 240 333 *All information contained herein is gathered from sources we consider to be reliable. However, we cannot guarantee its accuracy and interested persons should rely on their own enquiries. ** Photography and illustrations are for presentation purposes only and should be regarded as indicative representations only.