

8 White Flats Terrace, Croydon, Vic 3136



Townhouse For Rent

Sunday, 23 June 2024

8 White Flats Terrace, Croydon, Vic 3136

Bedrooms: 3

Bathrooms: 2

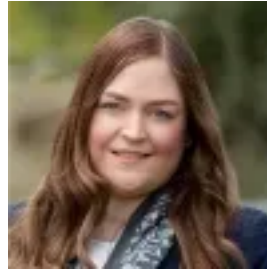
Parkings: 2

Area: 184 m2

Type: Townhouse



Will Pask
0398798827



Samantha Holbrook
0398798827

\$660 per week

To Apply:<https://app.snug.com/apply/raywhiteringwood>Nestled within a serene enclave of modern residences, this expansive and contemporary townhouse eagerly awaits your arrival. Boasting a host of features, including a single garage with internal access, it exudes an aura of refined comfort and energy efficiency. Bathed in natural light, its design showcases lofty ceilings, soothing hues, plush carpets, premium window dressings, ducted heating, and a split system in the master bedroom. The generous lounge/dining area is ideal for both unwinding and entertaining, seamlessly flowing out to a spacious undercover backyard designed for low-maintenance living. Revel in tranquillity with loved ones, free from the burden of major lawn care. A well-equipped kitchen awaits, boasting stainless steel appliances, gas cooking, and a dishwasher. Completing the lower level are a European-style laundry and a convenient guest powder room, thoughtfully integrated into the floor plan. Upstairs, three ample bedrooms await, each with its own robes. The master suite is accompanied by an ensuite, while a central family bathroom offers a separate bathtub and shower. Conveniently situated near Burnt Bridge Shopping Centre, Ainslie Park Reserve, Kalinda Primary School, Yarra Valley Grammar, Eastland, and EastLink, this location is sure to impress. Additionally, Croydon Central Shopping Centre and Kilsyth Churinga Shopping Centre, along with public transportation options, are within easy reach. Ruskin Park Primary School and Dorset Golf Course are a leisurely stroll away, with Eastland and EastLink just a short drive from your doorstep.