

**9/130 Crimea Road, Marsfield, NSW 2122**



**Townhouse For Sale**

Wednesday, 26 June 2024

9/130 Crimea Road, Marsfield, NSW 2122

**Bedrooms: 2**

**Bathrooms: 1**

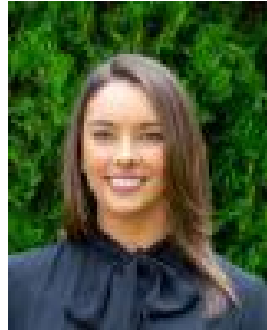
**Parkings: 1**

**Area: 136 m2**

**Type: Townhouse**



Allison Mifsud  
0405138408



Danielle Jenkins  
0459341200

**\$920,000 - \$980,000**

Spacious & light filled townhouse is peacefully set in a quiet and convenient location. Within easy access to Epping Boys High, Macquarie Uni, Shopping Centre and Macquarie Business Park.\* Combined spacious lounge/dining room\* Neat kitchen overlooks courtyard, internal laundry with 2nd w/c\* 2 generous bedrooms, main with built in robe\* Full bathroom with separate bath & shower\* Large paved courtyard, single car space, plush carpet throughout\* Walk to parks, cafe's, restaurants, & Epping Boys High School\* Catchments for Eastwood Heights Primary, Epping Boys, Cheltenham Girls, & Carlingford High School

Approx. Sizes - Total: 154sqm, Internal (incl. courtyard): 136sqm, Parking: 16sqm, Storage: 2sqm

Approx. Outgoings - Strata: \$1,211.25, Council: \$343pq, Water: \$171.41pq