

Address available on request, Roseville, NSW 2069



Townhouse For Sale

Wednesday, 17 April 2024

Address available on request, Roseville, NSW 2069

Bedrooms: 4

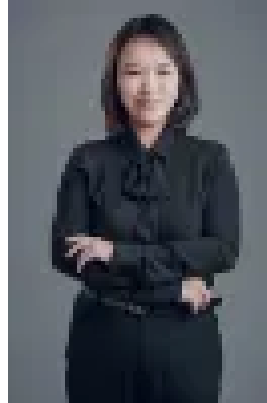
Bathrooms: 3

Parkings: 2

Type: Townhouse



Michelle Kirk
0424011336



Robyn (Lingyun) Bao
0449078721

Sanctuary townhouse living for elite families

Set in Roseville's green, heritage heart, The Archwood is a perfectly balanced community of four-bedroom townhouses. One that blends the best of luxury living with a private and spacious family home. Designed by leading Australian designer DKO and positioned in close proximity to some of the best schools in NSW, each townhouse provides a great low maintenance living environment with sun filled interiors, a masterfully designed kitchen, and private outdoor area for entertaining. Appointed Builder : Growth built Features - Over-sized bedrooms with contemporary designed bathrooms - High-quality finishes, high-end appliances, and ducted air-con Premium Location - A 5-minute walk to Roseville Train Station - 18 min drive to Sydney CBD - 11 min walk to Chatswood Chase - 13 min walk to Chatswood Westfield - 15 min walk to Chatswood Station - 14 min drive to North Sydney CBD - 11 min drive to Royal North Shore Hospital - Cinemas, parks, cafes, and restaurants moments away - Walk to quality private schools