

Lot 2/76 Sutherland Road, Jannali, NSW, 2226

Townhouse For Sale

Monday, 5 August 2024



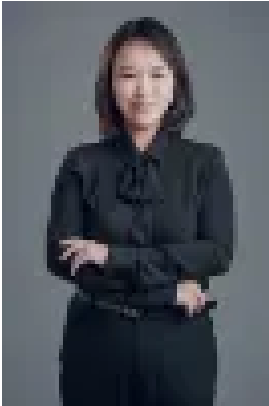
Lot 2/76 Sutherland Road, Jannali, NSW, 2226

Bedrooms: 4

Bathrooms: 3

Parkings: 2

Type: Townhouse



Robyn (Lingyun) Bao
1800789000

Off The Plan - Luxury Townhouse in Jannali

Estimated completion in the middle of 2025.

Located at prime land in the heart of Jannali, the proposed complex includes 5 townhouses with a walking path down to Oxley Ave, where it only takes 3 minutes to walk to Jannali Station. Close to shops and cafes.

Lot 2 has 4 bedrooms (master with ensuite), 3 bathrooms, and 2 car spaces.

Some features are:

- * Downstairs has 1 bedroom, 1 bathroom, living and dining, and laundry
- * Upstairs has 3 bedrooms and 2 bathrooms (Master with ensuite)
- * North-facing back courtyard
- * 40mm stone kitchen bench top with polyurethane joinery
- * 700mm gas cooktop with stone splashback
- * Timber flooring in living area, carpet in bedrooms
- * Full-height tiling to bathrooms and laundry
- * Ducted air conditioning
- * Two car spaces (stacker)

For more information, please contact Michelle on 0424011336