

1/205 Rattray Road, Montmorency, Vic 3094



Unit For Rent

Wednesday, 10 July 2024

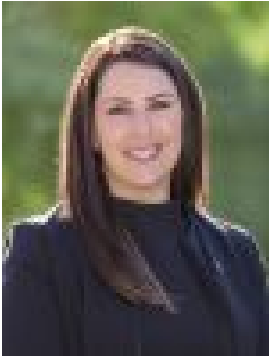
1/205 Rattray Road, Montmorency, Vic 3094

Bedrooms: 3

Bathrooms: 2

Parkings: 1

Type: Unit



Nicole Manley
0402739635

\$675 per week

Hidden gem and low maintenance charm Nestled on a dual occupancy block and set back from the street, this home offers unparalleled privacy and an impressive low-maintenance lifestyle. The moment you step inside, you'll be captivated by its thoughtful design and functionality. A generous lounge area welcomes you, seamlessly connecting to a functional kitchen and meals area. The well-appointed kitchen features quality stainless steel appliances and a dishwasher while glass sliding doors lead to a raised decking area, perfect for entertaining. This space flows effortlessly into secure front gardens, complemented by low-maintenance pathways and vegetable gardens. The rear of the home offers a grassed area ideal for relaxation, along with a carport featuring a secure remote roller door (installation pending). This combination of functionality and liveability creates an enviable outdoor space. The master bedroom includes a built-in robe and an updated ensuite two additional robed bedrooms share a centrally located bathroom and a separate toilet, completing this single-level home. Enjoy the convenience of a single carport with a remote roller door, gas ducted heating, evaporative cooling, ceiling fans, new blinds and fresh paint throughout the home is positioned just a short walk from the station and the vibrant mix of boutiques, eateries, cafes, and entertainment venues along Were Street, this home is perfectly situated for an enticing lifestyle. The heart of Greensborough, including the Plaza, is only minutes away, offering further shopping and leisure options. Jellis Craig North East Property Management invites you to inspect this property. If you would like to inspect this property please click 'book inspection' or 'make an appointment' and we will be in contact to arrange a suitable time. Alternatively, you can email the agent or visit the property listing on www.jellisrcraig.com.au and click 'Book Inspection'.