

Unit 1/45 Waldheim Street, Annerley, Qld 4103

Sold Unit

Friday, 1 September 2023

Unit 1/45 Waldheim Street, Annerley, Qld 4103

Bedrooms: 2

Bathrooms: 1

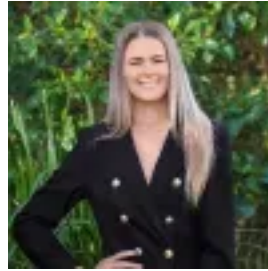
Parkings: 1

Area: 112 m2

Type: Unit



Deanne Hansom
0739061366



Ashleigh Hansom
0739061366

\$470,000

Be quick, this is a rare find of generous living space, and perfect location only 4-5 radial km from the ever-growing Brisbane CBD. You are a short distance to the Queensland University via the Greenbridge, or the PA hospital. This is perfect for the Savvy investor or the homeowner and a must to view. Local shops, schools, day-care, parks, bikeways, bus stops, trains are all minutes from your door. Built in 1970 this property showcases the best of an older build with space, light and well thought out storage. Open plan living opening onto the front sunroom gives you plenty of area to relax and entertain and yet the bedrooms are also generous in space. As a front facing apartment you have the benefit of extra windows giving you that beautiful light throughout. Refreshed throughout, you have air-conditioned living, plantation shutters on windows, timber look floors and a kitchen that has been updated. Perfect to either continue the tenancy or simply move in. Features:- Cavity brick unit with an oversized layout - 2 generous bedrooms with built-in wardrobes, plantation shutters & ceiling fans- Open plan living and dining area with air conditioning- Enclosed balcony / sunroom with a leafy outlook . - Bathroom with vanity, oversized shower & separate toilet- Refreshed kitchen with stainless steel upright oven, dishwasher and ample storage- Single lock up oversized garage with laundry & room for a workshop or space for the extra toys- Only metres to the bus, cafes, Junction Park Primary across the road- An easy walk to Buranda Shopping Centre, PA Hospital & train- A bike ride to the Green Bridge connecting to UQ; or enjoy the local parks- Minutes to QUT, M3 Motorway both north & southbound, or Clem Jones tunnel connecting to the airport- Within the Brisbane South State Secondary College catchment- Approx 4-5 radial km to the Brisbane CBD- Currently rented at \$450.00 until 15/04/2024 Council Rates : Approx \$450.20 Per Quarter Body corporate fees: Approx \$888.75 Per Quarter Estimated rental return: \$440.00 - \$460.00 Per Week Disclaimer: The images used are not an exact representation of the unit and are used as a guide only.