

12/37 Bradley Street, Glenmore Park, NSW 2745

BESPOKE. REALTY.

Unit For Sale

Wednesday, 19 June 2024

12/37 Bradley Street, Glenmore Park, NSW 2745

Bedrooms: 3

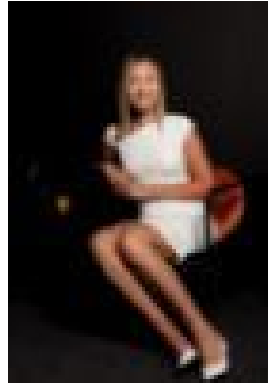
Bathrooms: 2

Parkings: 2

Type: Unit



Bradley George
0247379977



Briannan Nand
0490160662

Property Launch

Situated in the sought-after pocket of Mulgoa Rise, this three-bedroom unit offers high-quality inclusions and a versatile floor plan that will impress even the most discerning buyers. The modern design and thoughtful layout make this home a perfect choice for families seeking comfort and style. Enjoy the convenience of a relaxed and quiet complex while still being close to all essential amenities. Located near Glenmore Village, you'll have easy access to shopping, dining, and entertainment options. The proximity to the M4 Motorway and Penrith CBD ensures that commuting is hassle-free. The unit features three spacious bedrooms with built-in wardrobes, including a main bedroom with an ensuite for added privacy. The modern kitchen boasts stainless steel appliances, ample cupboard space, and elegant stone bench tops. The open-plan living and dining area opens onto a balcony with stunning mountain views, perfect for enjoying your morning coffee or evening relaxation. Additional features include an internal laundry, a main bathroom with a separate bathtub, shower, and toilet, as well as secure side-by-side basement car parking. Contact Bespoke Realty Group today to make this stylish residence your new home!