

**130/20 Victoria Road, Parramatta, NSW 2150**



**Unit For Rent**

Wednesday, 3 July 2024

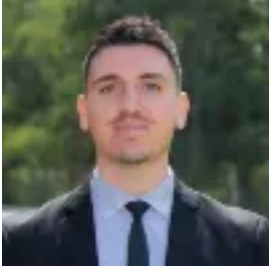
130/20 Victoria Road, Parramatta, NSW 2150

**Bedrooms: 1**

**Bathrooms: 1**

**Parkings: 1**

**Type: Unit**



Adriano Tassone

0298913333

**\$570.00 per week**

ACCESS TO UNIT VIA SORRELL STREET & ROSS STREET PARRAMATTA WHERE IT STATES UNITS 127-137PLEASE REGISTER YOUR INTEREST USING THE BOOK INSPECTION LINK TO ENSURE YOU DO NOT MISS OUT ON THE UPDATES FOR THIS PROPERTY. THOSE NOT REGISTERED MAY MISS OUT ON A VIEWING OPPORTUNITYTHANK YOUSet in a quality apartment complex with executive living is this modern apartment located in the 'Entrada Building' corner of Victoria Rd & Church St. Only a short stroll to ground level of the complex you will find a coles shopping centre, reputable cafes & close proximity to local transport. This unit features: - Brand new flooring throughout- Freshly painted throughout- Split Level spacious living- Modern kitchen with stainless steel appliances, gas cooking & dishwasher- Combined lounge & dining space, split system air condition & balcony- Large bedroom with a built in wardrobe & a split system air condition- Modern bathroom- Internal laundry & dryer- The Unit is located on level 1 with intercom & lift access to the complex- Basement car space provided"Ray White Parramatta/Oatlands/Northmead/Greystanes, its directors, employees and related entities believe that the information contained herein is gathered from sources we deem to be reliable. However, no representation or warranties of any nature whatsoever are given, intended or implied. Any interested parties should rely on their own inquiries."