

**16/7 Blaxland Avenue, Newington, NSW, 2127**

**Horwood Nolan.**

**Unit For Sale**

Friday, 1 November 2024

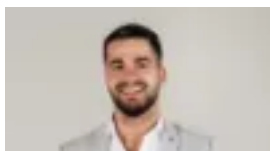
16/7 Blaxland Avenue, Newington, NSW, 2127

**Bedrooms: 3**

**Bathrooms: 2**

**Parkings: 2**

**Type: Unit**



Jacob Saleh

0297436656

## Peacefully situated family home in prized leafy location

Strata Rates: \$2,027pq

Internal Size: 134sqm

Total Size: 167sqm

Nestled in a well-maintained and tightly held complex surrounded by lush greenery and close to every amenity, this neatly presented three-bedroom apartment boasts a spacious layout with excellent natural light, open plan living spaces and seamless indoor-outdoor flow. The north-facing residence is superbly located just 600 metres from bustling Newington Marketplace, with vibrant village shops and cafes, city transport, riverside parks and delightful walking trails all within a 500-metre radius.

Expansive lounge and dining area with leafy views

Full-height glass doors onto entertainers' balcony

Spacious gas kitchen with sunny breakfast nook

Main bedroom with built-in and balcony access

Two more peaceful bedrooms with built-in robes

Stylish tiled bathroom and luxe ensuite with tub

Internal laundry and ample storage throughout

2 Car space, secure entry, well-kept common areas

Easy access to motorway for rapid city commutes

Newington Public School 1.2km, buses in 550m