

18/147 Smith St, Summer Hill, NSW, 2130

HARRIS TRIPP

Unit For Sale

Friday, 1 November 2024

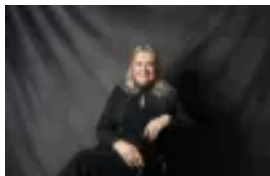
18/147 Smith St, Summer Hill, NSW, 2130

Bedrooms: 2

Bathrooms: 1

Parkings: 1

Type: Unit



Sharon Skrabanich
0287524500

Peaceful Tree-Top Retreat in Eclectic Inner West Neighbourhood

Experience the elegance and serenity of this well-appointed, renovated double-brick apartment, set back from the street, and nestled amongst the treetops. This top floor, private haven captures a desirable North-East aspect and light from all directions. The stylish interior boasts a spacious living and dining area, two generous bedrooms with built-in wardrobes, and a separate study that flows out to a peaceful wrap-around terrace enveloped in lush greenery.

This apartment is ideally situated in Summer Hill, providing all the essentials for modern living with Summer Hill Train Station and Lewisham West Light Rail nearby; city access is effortless. Additionally, a variety of parks, cafes, bars, and restaurants are just moments away, enriching the vibrant lifestyle this residence offers.

- Coveted top-floor position, no common walls, flooded all day with natural light
- Spacious open plan living and dining area with tranquil garden views
- Additional study area or versatile area for guest accommodation
- Air-conditioning in main living space, and ceiling fan in master
- Two spacious bedrooms with large built-in robes
- Alfresco terrace dining perfect for entertaining
- Secure intercom complex, private, elevated location
- Lock-up garage with plenty of storage space
- Contemporary kitchen featuring composite-stone kitchen benches
- Ample storage, large pantry cupboards, double-draw dishwasher
- Internal Laundry with dryer; offers additional butler's pantry room
- Ideally located a short walk away to Darrell Jackson Gardens, Summer Hill Train Station, Village and Lewisham West Light rail

Property size: 123 sqm approx. including garage

Water rates: \$179 per quarter approx.

Council rates: \$371 per quarter approx.

Strata rates: \$1,309 per quarter, approx.