

2/13 Park Avenue, Westmead, NSW 2145



Unit For Rent

Saturday, 29 June 2024

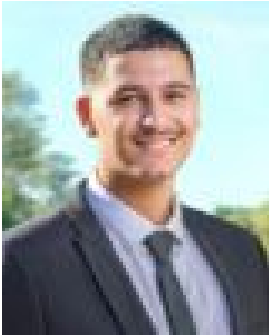
2/13 Park Avenue, Westmead, NSW 2145

Bedrooms: 2

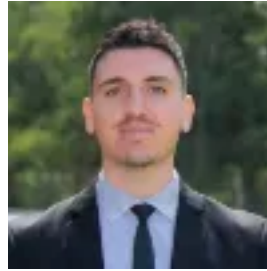
Bathrooms: 2

Parkings: 1

Type: Unit



Ali Awick
0298913333



Adriano Tassone
0298913333

\$620 per week

PARRAMATTA PARK AT YOUR DOORSTEP!! PLEASE REGISTER YOUR INTEREST USING THE BOOK INSPECTION LINK TO ENSURE YOU DO NOT MISS OUT ON THE UPDATES FOR THIS PROPERTY. THOSE NOT REGISTERED MAY MISS OUT ON A VIEWING OPPORTUNITY THANK YOU

A solid full brick unit complex with only 5 in total sits opposite to Parramatta Park. It boasts a spacious floor plan perfectly positioned in the heart of Westmead with a sunny aspect & cross ventilation & only a short stroll to Westmead railway station, reputable Westmead public school, public, private & children's hospital, local shops & city buses. The unit features:- Two great sized bedrooms with wardrobes- Main with an ensuite & balcony access - Fully tiled full size modern bathroom with shower- Spacious lounge & dining space with a split system air condition & second balcony- Kitchen with pantry, gas cooking & dishwasher- Floorboards throughout - Internal laundry with clothes dryer- Single garage provided"

Ray White Parramatta/ Oatlands/ Northmead/ Greystanes, its directors, employees and related entities believe that the information contained herein is gathered from sources we deem to be reliable. However, no representation or warranties of any nature whatsoever are given, intended or implied. Any interested parties should rely on their own inquiries."