

# 2/27 Cornelia Street, Wiley Park, NSW 2195



## Unit For Rent

Tuesday, 25 June 2024

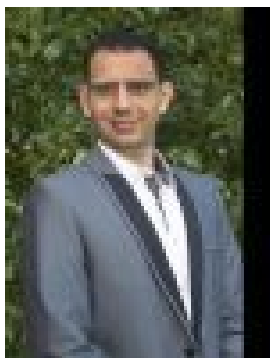
2/27 Cornelia Street, Wiley Park, NSW 2195

**Bedrooms: 2**

**Bathrooms: 1**

**Parkings: 1**

**Type: Unit**



SAM SOUEID

**\$565 per week**

Nestled in a peaceful and secure complex, this modern first floor residence optimising luxury with modern living. Meticulously renovated to create seem less luxury appeal allowing the convenience of a modern lifestyle. Capturing an abundant of natural light through a north facing living space, with easy access to a sizeable balcony. Resting in a convenient location only moments from local shops, train station and entry to Sydney's famous M5 Motorway. Features Include;- 2 renovated and good sized bedrooms (One equipped with a custom built built in wardrobe)- Spacious living room capturing a stream of natural light with balcony access- Premium custom designed kitchen with ample cupboard space with brand new appliances combined with a dining domain- Neat and tidy bathroom with a separate stand alone shower- Freshly painted throughout- Sparkling tiled floors throughout- Internal laundry room with storage space- Car space - Walking distance to local shops, schools and train station "A PERFECT OPPORTUNITY TO CALL HOME"