

**2/276 Pacific Highway, Greenwich, NSW 2065**



**Unit For Rent**

Sunday, 23 June 2024

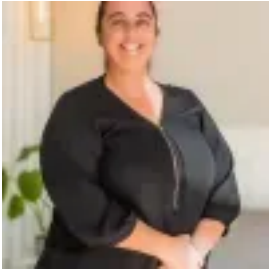
2/276 Pacific Highway, Greenwich, NSW 2065

**Bedrooms: 2**

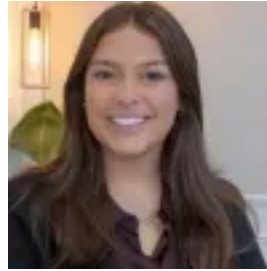
**Bathrooms: 1**

**Parkings: 1**

**Type: Unit**



Sarah Sunn  
0294510044



Zoe Bridgman  
0294510044

**\$625 per week**

This well-kept apartment delivers an abundance of natural light, spacious living, peace and privacy in a convenient location. Situated at the rear of the block overlooking bushland, and one of only two apartments on this level, this apartment would make ideal accommodation for nursing staff or medical employees being only minutes to Royal North Shore Hospital.\* Whisper quiet apartment in central location\* Generous bedrooms, both with built-in wardrobes\* Spacious open plan living area with floating floorboards \* Modern well appointed kitchen with dishwasher, microwave and fridge, opening into living area\* Entertainers balcony with leafy outlook and distant city views\* Full bathroom with separate bath and shower\* Shared laundry (with one other apartment) and private use undercover parking space\* Freshly painted throughout and new carpet in bedrooms (colour different to photo)This fantastic apartment is just footsteps to St Leonard's shops and train station, North Sydney TAFE and Royal North Shore Hospital and just 5 minutes drive to the buzzing cafes and restaurants of Crows Nest.All information contained herein is gathered from sources we consider to be reliable. However, we cannot guarantee or give any warranty about the information provided. Interested parties must solely rely on their own enquiries.