

2/50 Alva Terrace, Gordon Park, Qld 4031



Unit For Sale

Tuesday, 2 July 2024

2/50 Alva Terrace, Gordon Park, Qld 4031

Bedrooms: 2

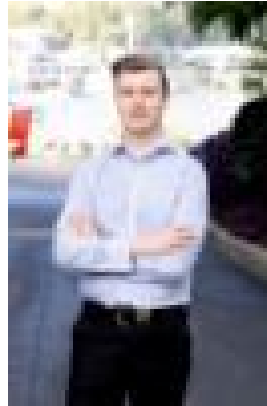
Bathrooms: 1

Parkings: 1

Type: Unit



Dean Hamilton
0400799447



Harry Harris
0420873322

OPEN TO OFFERS !

Sitting within one of Brisbane's most coveted suburbs, this well maintained ground floor unit boasts an incomparable lifestyle that is amplified by it's close proximity to an endless amount of shopping and entertainment venues, along with the famed Kedron Brook Bikeway being only 800m from your front door! The apartment boasts two spacious bedrooms, both of which are equipped with ceiling fans and built-in robes. The kitchen has been fitted to modern specifications, featuring stainless steel appliances, expansive countertops, and ample storage space. The main living and dining area effortlessly flows onto the units covered courtyard, perfect for entertaining guests while taking advantage of the homes north facing aspect. FEATURES: + North facing aspect, allowing for ample natural light. + Large covered alfresco within the properties courtyard. + Two spacious bedrooms, both equipped with built-ins. + Well equipped kitchen, with stainless steel appliances and ample storage space. + Spacious living area, that takes advantage of the properties north facing aspect. + Single secure garage space, with additional storage space. + Modern bathroom with quality fixtures and fittings. + Internal laundry. + Tiled and carpeted flooring throughout. + Located only a 300m walk away from the Kedron Brook Bikeway. + Easy access to public transport via Stafford Rd. + Admin fund \$1687.38 per year+ Sinking fund \$2222.2 per year + Sinking fund balance \$104,554.43 26/6/24A property that presents this much value will not last long in the current market! Call Dean and Harry today for the sales report and rental appraisal!