

20/10 Pimlico Crescent, Wellard, WA 6170



Unit For Rent

Wednesday, 10 July 2024

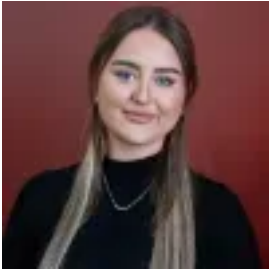
20/10 Pimlico Crescent, Wellard, WA 6170

Bedrooms: 2

Bathrooms: 2

Parkings: 1

Type: Unit



Gemma Eldrid
0894394405

\$525 per week

We welcome to the rental market this lovely ground floor apartment that is centrally located in the Village in Wellard with everything close by within walking distance. More Photos Coming SoonProperty Features Include:2 Bedrooms1 Bathroom - 2 ToiletsOpen Plan Kitchen, Dining & Family RoomSmall courtyardSplit System Air Conditioner in open living areaClothes DryerStoreroom 1 Parking Bay providedBe quick as this beauty wont last long, Strictly No Pets - Strata Complex. Please email leasing@encoreproperty.com.au or call Tayla 9439 4405 to arrange a private viewing, this is a break lease. Applications submitted online will be processed once you attend a viewing.