

203/6 Quarry Road, Sherwood, Qld 4075



Unit For Sale

Tuesday, 2 July 2024

203/6 Quarry Road, Sherwood, Qld 4075

Bedrooms: 2

Bathrooms: 2

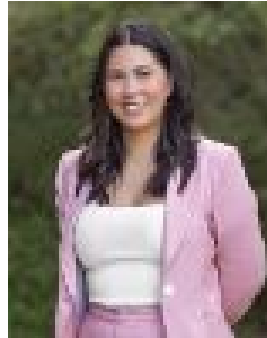
Parkings: 2

Area: 107 m2

Type: Unit



Lisette SchultsRand
0488518188



Shay Watene
0451154558

FOR SALE

Boasting a lifestyle position between the Sherwood and Corinda shopping precincts and just a moment's walk from transport, this two-bedroom apartment presents the perfect home or investment in the boutique 'Sherwood Residences'. Bright, open and airy, the low-maintenance design features air-conditioning throughout and benefits from natural light and cooling breezes to keep you comfortable year-round. Make yourself at home in the relaxing living and dining area, which adjoins the stylish modern kitchen. Creating indoor/outdoor flow, sliding glass doors open to the private entertainer's balcony, enjoying lovely leafy outlooks and forming the ideal spot for alfresco dining, drinks and catch-ups with friends. A study nook accompanies two bedrooms with built-in robes, two bathrooms, and a concealed laundry. The master bedroom features an ensuite and opens directly to the balcony. There is also a secure parking space downstairs. Property features:- Modern boutique apartment in 'The Sherwood Residences'- Open-plan living and dining area leading to a private balcony- Stonetop kitchen with great storage and stainless steel appliances- Study nook and two generous bedrooms with built-in robes- Two bathrooms (including an ensuite) and a concealed laundry- Air-conditioning in the living area and both bedrooms- Secure entry, secure car space and lift access- Resort-style amenities, including a lap pool and BBQ area- Walk to transport and the Sherwood and Corinda lifestyle precincts Just 450m from Sherwood Central and Corinda Plaza, this apartment presents a sensational blue-chip lifestyle on the doorstep of cafes, restaurants, shops, Coles and Woolworths. Surrounded by recreation space, you can enjoy weekends exploring Sherwood Arboretum, playing a round at Ambiwerra Tennis Centre, or hitting the fairways at Corinda Golf Course. With bus stops steps away and Sherwood and Corinda train stations just 750m from your door, you can enjoy quick and easy travel to UQ and the CBD. DISCLAIMER: Whilst all care has been taken to ensure that the information provided herein is correct, we do not take responsibility for any inaccuracies. Accordingly, we recommend that all interested parties should make their own enquiries and due diligence to verify the information. Any personal information provided to Cameron Crouch Property T/As Ray White Sherwood, will come under the terms set out in our Privacy Policy, which can be found here for your convenience: <https://www.raywhite.com/privacy>.