

212/87 Mount Street, Heidelberg, Vic 3084

Unit For Rent

Wednesday, 10 July 2024

212/87 Mount Street, Heidelberg, Vic 3084

Bedrooms: 2

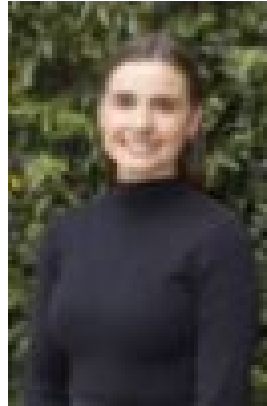
Bathrooms: 2

Parkings: 1

Type: Unit



Hugo Banks
0385393333



Taylah Staples
0458999934

\$550 per week

MONTVUE Melbourne's North Eastern suburbs have long been a well-kept secret for those lucky enough to call this beautiful area home. Lush landscapes, tree lined streets and high quality amenity on the doorstep of the CBD are just a few of the reasons why MontVue is not going to last long. As the rat race accelerates, tenants are flocking to the urban sanctuary of Heidelberg, relishing in its proximity to transport, amenities and close to the CBD. This oversized two Bedroom apartment at MontVue is designed for tenants who are looking for a luxurious home environment, central to all that Heidelberg has to offer. Inside your apartment are two great sized bedrooms with BIR and master bedroom with an ensuite, kitchens boast stunning stone benches, abundant cupboards and thoughtfully selected appliance technology. Open plan living and dining spaces that opens on to a spacious balcony and central bathroom with Laundry. An emphasis on natural light plus elegance throughout. These apartments are designed to be sanctuaries for busy urbanites. Completing the picture are the spectacular vistas of the ranges from the private rooftop garden. This fully landscaped space will impress all comers, with multiple seating areas and BBQ facilities. Parking for one Car included (*regular car space*).