

**22401/2B Figtree Drive, Sydney Olympic Park, NSW, Horwood Nolan.
2127**

Unit For Sale

Sunday, 8 September 2024

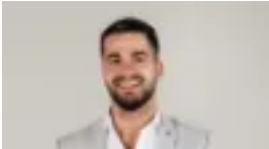
22401/2B Figtree Drive, Sydney Olympic Park, NSW, 2127

Bedrooms: 2

Bathrooms: 2

Parkings: 1

Type: Unit



Jacob Saleh
0297436656

Executive-style elegance with stunning skyline views

Strata Levy: \$1362pq

Internal Size: 93sqm

Carspace: 13sqm

Total Size: 108sqm

This magnificent designer apartment, perched on the 24th floor of the esteemed Mirvac Pavilions in the heart of Sydney Olympic Park, delivers big on lifestyle convenience and easy elegance. With a generous layout that celebrates sweeping park and city views, it boasts private bedrooms, floor to ceiling windows and a fabulous entertainer's terrace. Shared resort-style facilities onsite and an easy walk to trains, shops and parks make this a premium opportunity in a super convenient location.

Prestigious complex set in landscaped gardens
Meticulous presentation with aircon and carpets
Generous living areas with full-length windows
Modern gas kitchen with dishwasher plus storage
Living and 2nd bed open to entertainer's balcony
Two bedrooms include main with ensuite and bath
Internal laundry plus linen closet and skylights
Secure car parking plus easy level lift access
Shared facilities incl. gym, gardens & BBQ area
Surrounded by parklands and close to transport