

22C/541 Pembroke Road, Leumeah, NSW, 2560

STONE

Unit For Sale

Tuesday, 13 August 2024

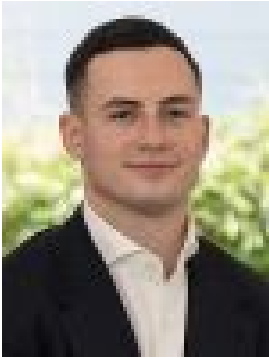
22C/541 Pembroke Road, Leumeah, NSW, 2560

Bedrooms: 2

Bathrooms: 2

Parkings: 1

Type: Unit



Andrew Diadyk
0246553000

Style and convenience

Offering a blend of modern living and convenience, this two-bedroom, double-storey apartment is located in a prime location, this apartment has everything.

Step inside to discover an open-plan living space that seamlessly flows onto a large balcony. With two well-appointed bedrooms, each providing ample space, natural light, and built-in wardrobes, with the master offering an ensuite and its own balcony. Perfect for both investors and first home buyers who appreciate modern living, comfort and convenience.

With its prime location, the apartment is just moments away from essential amenities, including local schools, parks, shopping, and transport options. Buses and Leumeah Train Station are within walking distance.

Key Features:

- > Internal laundry
- > Split air conditioning
- > Built-in to all bedrooms
- > Communal gym and pool
- > Stainless steel appliances
- > Modern kitchen with stone bench tops
- > Allocated car park in the secure basement

Approximate distance:

- > 100 m to West League Club
- > 190 m to Leumeah Train Station
- > 950 m to Leumeah Public School
- > 1.9 km to Leumeah High School
- > 2.5 km to Campbelltown Station
- > 2.8 km to Campbelltown Mall

NOTE: In preparing this, we have used reasonable endeavours to provide information that is true, however it is provided on the basis that readers will be responsible for making their own assessment of the information and are advised to verify all relevant representations, statements and information. All photographs and images are representative only, for marketing purposes.