

3/12 Surrey Road, Mount Waverley, Vic 3149

buxton

Unit For Rent

Wednesday, 19 June 2024

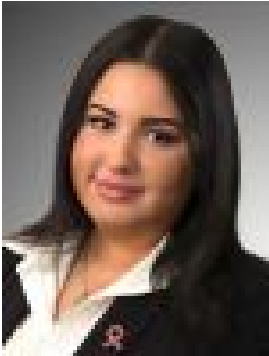
3/12 Surrey Road, Mount Waverley, Vic 3149

Bedrooms: 2

Bathrooms: 1

Parkings: 1

Type: Unit



Emily Katiforis
0430622113



Alex Mayne
0399157888

\$550 per week

Discover this lovely two-bedroom home, ideally situated within walking distance to Mount Waverley Secondary College, Essex Heights Primary School, Essex Heights Reserve, and convenient bus stops. Enjoy the close proximity to PLC, Chadstone Shopping Centre, Ashwood and Ashburton Villages, Holmesglen TAFE, Deakin University, Mount Waverley and Jordanville Train Stations, the Monash Freeway, and the Melbourne CBD. Features Include: • Kitchen/meals area with split system • Living room with wall heater • Master bedroom with split system, walk in robe and access to main bathroom • Second bedroom with built in robe • Main bathroom with bath tub and separate toilet • Oversized courtyard • Single garage (middle one) Further Features Include: • Gas cooktop • Solar panels *** Please be advised the property is unfurnished ***** Open inspections subject to change or cancellation without notice. Please register to receive all updates *** For further inquiries please call the assigned leasing consultant. PHOTO 'ID' AND PHONE NUMBER MUST BE PROVIDED WITH ALL ENQUIRIES. ** Every effort has been made to ensure the accuracy of the information contained in this advertisement. The publisher, their officers, employees, representatives, contractors or related parties however, shall have no liability to any person with respect to any accuracy, inaccuracy or omission ***** At Buxton we prioritize the safety and security of our prospective tenants. Please be aware that we will never request your bank account details or any payment until you've been officially approved through our process. Additionally, we do not advertise our rental properties on Facebook or any other social media platforms. Your security is our priority ***