

**313D/1 Drill Street, Hawthorn, Vic 3122**

**Tiga**

**Unit For Rent**

Saturday, 29 June 2024

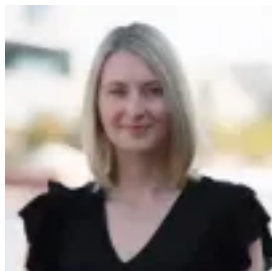
313D/1 Drill Street, Hawthorn, Vic 3122

**Bedrooms: 2**

**Bathrooms: 3**

**Parkings: 1**

**Type: Unit**



Tania Galinec  
0406888889



Frank Chai  
0406888889

**\$900 per week**

Luxury 2 bed, 2 bath, Study + 1 car park apartment available for lease. Discover unparalleled luxury at Sierra Hawthorn, a new benchmark in sophisticated living by award-winning architect Rothelowman. Located in the heart of Hawthorn, this brand-new apartment complex offers immediate occupancy with Siemens-equipped kitchens, open living spaces, and luxury finishes. Residents enjoy exclusive access to:

- 20m indoor swimming pool
- Steam room
- Sauna
- Gym

Conveniently positioned off Burwood Road with proximity to local amenities, Sierra promises an unparalleled lifestyle in the heart of one of Melbourne's most sought-after suburbs. Key features of this apartment include:

- Open plan living with floor-to-ceiling windows
- Floorboards
- Modern appliances
- High-quality finishes
- Built-in robes
- Secure intercom entry
- Secure car park
- Private balcony
- Integrated Fridge

Register your interest now for a private tour. Elevate your lifestyle today! Simply request an inspection by providing your details (please note that registering is essential to receive updates on changes or cancellations). Photography & videos advertised may vary from the current property conditions, views, and furniture (if applicable). Inspections are recommended.