

44/12 Wylde Street, Potts Point, NSW 2011



Unit For Rent

Friday, 5 July 2024

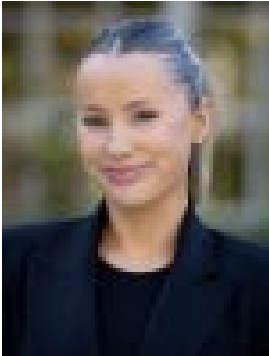
44/12 Wylde Street, Potts Point, NSW 2011

Bedrooms: 1

Bathrooms: 1

Parkings: 1

Type: Unit



Heidi Gouverneur
0293573434



Scott Hawkins
0417057151

\$685 per week

North facing harbour side apartment with bright interiors and a spacious layout that features a unique full length balcony that enjoys both harbour and city views. Features:- Impressive full length balcony, north facing- Both living and bedroom open onto balcony- Well presented light kitchen with dishwasher and storage- Generous bedroom, harbour views and ensuite- Lift access, security building Inner city and harbour side lifestyle location with stroll to all that Potts Point village has to offer. Walking to Kings Cross station, harbour parks and CBD.