

5/219 Moray Street, New Farm, Qld 4005



Unit For Rent

Monday, 1 July 2024

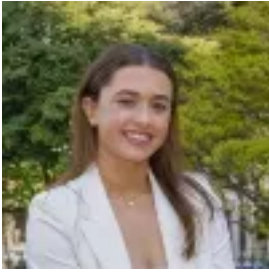
5/219 Moray Street, New Farm, Qld 4005

Bedrooms: 2

Bathrooms: 2

Parkings: 1

Type: Unit



Ella Butler

0732311000

\$630 per week

Come and enjoy the peaceful surrounds of this great apartment. Close to all transport, shops, cafes, restaurants and all amenities you don't want to miss out. Features: 2 bedrooms with mirrored built in wardrobes and air-conditioning Master bedroom with en-suite and own private balcony 2 bathrooms one with bath tub Very spacious living and dining area Internal laundry This fabulous apartment offers great lifestyle options with easy access to the Brisbane River and New Farm Park as well as being close to Brunswick Street and Fortitude Valley, and only minutes away from the CBD. Utilities will be set up and paid for separately.