

5/39 Ovens Circuit, Whittlesea, Vic 3757



Unit For Sale

Sunday, 23 June 2024

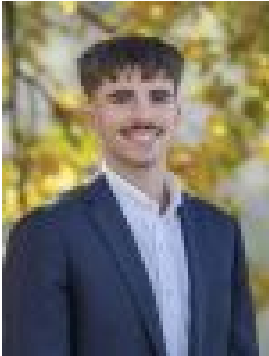
5/39 Ovens Circuit, Whittlesea, Vic 3757

Bedrooms: 2

Bathrooms: 1

Parkings: 1

Type: Unit



Noah Bullen

0455556251

\$445,000 - \$485,000

This immaculately presented free-standing unit offers an exciting prospect for both first home buyers and downsizers. Enjoying a scenic park side location in a quiet part of Whittlesea this property is sure to impress. Recently refreshed throughout, the open plan living dining space seamlessly connects to the modern kitchen offering stone benchtops, glass splash back, quality appliances and ample pantry space. With two generously sized bedrooms, both with built-in robes, and a shared contemporary bathroom. Outdoor entertaining is completed by a deck and pergola that enjoys morning sun and a leafy backdrop of Black Flat Reserve. With extras including split system heating/cooling, European laundry, garden shed and off street parking. A short stroll to Whittlesea town center and bus stops only at the end of the road enjoy everything Whittlesea has to offer with this home, inspect today!