

**6/102 Esmonde Street, East Lismore, NSW 2480**



**Unit For Sale**

Wednesday, 19 June 2024

6/102 Esmonde Street, East Lismore, NSW 2480

**Bedrooms: 2**

**Bathrooms: 1**

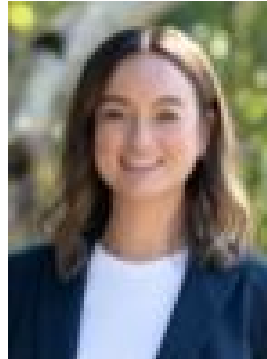
**Parkings: 1**

**Type: Unit**



Neil Scott

0266212438



Ashlee Robson

0439667101

**\$349,000 - \$369,000**

Light and bright, this spacious two bedroom unit, located in the popular over 50's Twin Palms complex, is sure to impress. Merely a short stroll from the Wyrallah Road shopping village and St Vincent's Hospital, this flood-free location could not be better. With the perfect, North to rear aspect, the home is filled with natural light, while the bright and fresh decor provides a real sense of space. The perfect spot to enjoy breakfast or your morning cuppa, the rear patio is the spot to soak up the morning sun or the cooling summer breezes. This tightly held complex is always popular due to it's low maintenance design and super handy location - be sure to arrange your early inspection.