

**6/236-238 Blaxland Road, Ryde, NSW, 2112**



**Unit For Sale**

Wednesday, 4 September 2024

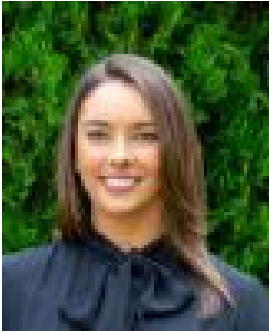
6/236-238 Blaxland Road, Ryde, NSW, 2112

**Bedrooms: 2**

**Bathrooms: 1**

**Parkings: 1**

**Type: Unit**



Danielle Jenkins  
0459341200



Allison Mifsud  
0405138408

## Light-Filled Apartment Within Moments Walk To Top Ryde

Welcome to this delightful two-bedroom apartment, where contemporary living meets convenience. Bathed in natural light, this residence is positioned in a well maintained complex, with the living & balcony spaces enjoying a tree-lined view & a north-east aspect. Located just a short stroll from Top Ryde Shopping Centre, you'll have an array of cafes, restaurants and shops at your doorstep making this an ideal home for those seeking a vibrant and convenient lifestyle.

- \* Bright & spacious lounge/dining flows out to undercover balcony
- \* New & modern kitchen w/sleek finishes including timber benchtop, dishwasher & washing machine space
- \* Two well-sized bedrooms, main including BIR, full brick & well maintained complex
- \* Neat tiled bathroom includes bathtub, single car space
- \* Ideal entry point for first home buyers
- \* Moments walk to Top Ryde Shopping Centre, Ryde Tafe & bus stop at your doorstep
- \* Catchment for Smalls Road Public, Marsden High & Riverside Girls

Approx. Total Size: 72sqm plus car space

Approx. Outgoings - Strata: \$650pq, Council: \$349pq, Water: \$172pq