

6/35 Rokewood Crescent, Meadow Heights, Vic 3048



Unit For Sale

Tuesday, 25 June 2024

6/35 Rokewood Crescent, Meadow Heights, Vic 3048

Bedrooms: 2

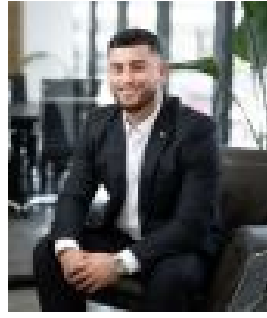
Bathrooms: 1

Parkings: 1

Type: Unit



Gianni D'Angelo
0466185825



Ali Faour
0393094888

Awaiting Price Guide

Nestled in the heart of Meadow Heights, this stunning unit offers not just a comfortable residence, but a breathtaking panoramic view of the picturesque valleys of Broadmeadows Valley Park, Shankland Wetlands, and Yuroke Creek. Get ready to be captivated by the beauty of nature right from your own living room! Welcome to 6/35 Rokewood Crescent, featuring 2 great-sized bedrooms and a central bathroom. The open-plan kitchen seamlessly flows into the living and dining areas, creating the perfect space for entertaining and everyday living. This unit also includes a single car garage for secure parking and additional storage options. Stay comfortable year-round with wall-mounted air conditioning and ducted heating. The decent-sized backyard offers a private outdoor oasis for gardening, relaxation, and alfresco dining, all within a generous 167m² of living space. Imagine living just 15 minutes from Melbourne Airport, making travel a breeze, and being only 4 minutes away from Meadow Heights shops for all your daily needs. The Meadow Heights Mosque is a mere 3-minute drive, ensuring convenience for your spiritual and community activities. With such a prime location, you'll have everything you need right at your fingertips while enjoying the tranquil beauty of the surrounding valleys. Demand for clean properties with low maintenance living and positioning like this is plentiful, don't miss out on an opportunity to secure your next home! Contact Gianni today to arrange an inspection.