

701/15 Guess Avenue, Wollli Creek, NSW 2205



Unit For Sale

Monday, 8 July 2024

701/15 Guess Avenue, Wollli Creek, NSW 2205

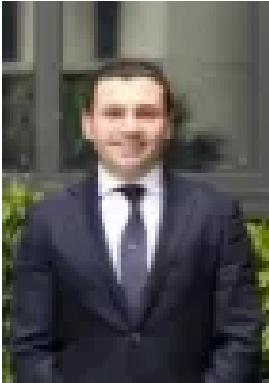
Bedrooms: 3

Bathrooms: 2

Parkings: 1

Area: 151 m2

Type: Unit



Stefan Bujak
0295977372

For Sale via Offers

Situated in the heart of thriving Wolli Creek, this stunning three-bedroom two-level apartment provides ample space, promises easy living and enjoys a wonderful floor-plan, perfect for entertaining both in and outdoors. - Situated in one of Wolli Creeks best blocks, six years young- Across from the new park, moments to Woolworths, Aldi, shops and station- North-easterly facing across two levels, capturing all day sun- Well sized open living, dining and kitchen space- Gourmet kitchen with high-end Bosch appliances - Luxurious bathroom on each floor- Private first level 43sqm* master suite with access to wrap-around courtyard- Big bedrooms with built-ins- Well sized wrap-around courtyard, great for pets** or entertaining- Secure car space, large storage cage, split-system air, gas cooking + much more!- Total lot size 151sqm*- Levies per quarter* Strata \$1,351, Water \$240, Council \$377 • all figures approx. ** subject to strata approval