

B201/17 Shepherd Street, Liverpool, NSW 2170

Unit For Sale

Tuesday, 30 January 2024

B201/17 Shepherd Street, Liverpool, NSW 2170

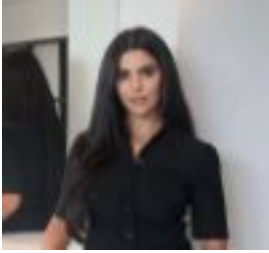
Bedrooms: 2

Bathrooms: 1

Parkings: 1

Area: 104 m2

Type: Unit



Larissa Schembri

0427582245

\$520,000 to \$570,000

Set in the sought after riverside 'Atrium' development, this spacious two bedroom apartment offers the finest standard of modern living. Conveniently located footsteps from The Paper Mill precinct and only a stroll away from Liverpool train station, Liverpool CBD and Westfield Liverpool, with the new Riverwalk in development connecting The Paper Mill precinct to the Liverpool train station and providing a riverside recreation space for the community. Upon inspection you will find:- Quality timber floorboards throughout- Single galley kitchen with stone bench tops and premium Miele appliances featuring gas cooking & dishwasher- Open plan living and dining flowing to entertainer's balcony- Alfresco entertainer's balcony with direct access from living room and bedrooms- Two bedrooms with built-in wardrobes- Separate Study area- Separate Internal laundry with clothes dryer- Split system air conditioning- Secure underground car space- Access to residents' rooftop terrace and communal landscaped gardens Location:- The rooftop houses an open-air residents only recreational area- Riverside precinct with future retail and boardwalk by the Georges River- Three minute drive to Liverpool station and buses- Surrounded by leading educational institution including the University of Wollongong and Western Sydney University campus- Four minute drive Westfield shopping centre and Liverpool CBD- Four minute drive Moments away Liverpool Hospital (the largest in NSW)